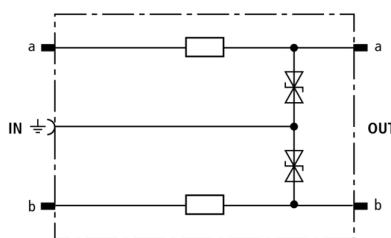


DRL RE 60 (907 424)

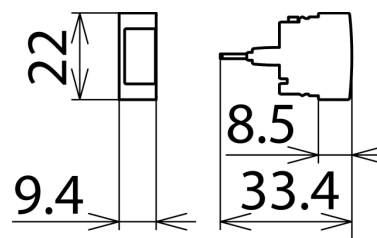
- Low voltage protection level for the protection of terminal equipment
- Energy-coordinated with DRL plug-in SPD block
- For installation in conformity with the lightning protection zone concept at the boundaries from 1 – 2 and higher



Figure without obligation

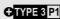


Basic circuit diagram DRL RE 60



Dimension drawing DRL RE 60

Protective plug (one pair), energy-coordinated with DRL plug-in SPD block, for use as single-stage protective device for terminal equipment with decoupling impedances. Ideally suited for signal circuits with common reference potential. Earthing via EF 10 DRL. For disconnection blocks or DRL plug-in SPD blocks only.

Type	DRL RE 60
Part No.	907 424
SPD class	
Nominal voltage (U_N)	60 V
Max. continuous operating voltage (d.c.) (U_C)	70 V
Max. continuous operating voltage (a.c.) (U_C)	49.5 V
Nominal current (I_N)	0.4 A
D1 Total lightning impulse current (10/350 μ s) in combination with DRL 10 B... (I_{imp})	5 kA
D1 Lightning impulse current (10/350 μ s) per line in combination with DRL 10 B... (I_{imp})	2.5 kA
C2 Total nominal discharge current (8/20 μ s) in combination with DRL 10 B... (I_n)	10 kA
C2 Nominal discharge current (8/20 μ s) per line in combination with DRL 10 B... (I_n)	5 kA
C1 Nominal discharge current (8/20 μ s) per line without DRL 10 B... (I_n)	0.25 kA
Voltage protection level line-PG for I_{imp} D1 in combination with DRL 10 B... (U_P)	≤ 115 V
Voltage protection level line-line at 1 kV/ μ s C3 (U_P)	≤ 185 V
Voltage protection level line-PG at 1 kV/ μ s C3 (U_P)	≤ 95 V
Series resistance per line	6.8 ohms
Cut-off frequency line-PG (f_c)	10.5 MHz
Capacitance line-line (C)	≤ 250 pF
Capacitance line-PG (C)	≤ 500 pF
Operating temperature range (T_U)	-40 °C ... +80 °C
Degree of protection	IP 20 (when plugged in)
Plugs into	LSA disconnection block 2/10 or DRL 10 B ... plug-in SPD block
Earthing via	earthing frame
Enclosure material	polyamide PA 6.6
Colour	yellow
Test standards	IEC 61643-21 / EN 61643-21
Weight	4 g
Customs tariff number (Comb. Nomenclature EU)	85363010
GTIN	4013364107649
PU	10 pc(s)

We reserve the right to introduce changes in performance, configuration and technology, dimensions, weights and materials in the course of technical progress. The figures are shown without obligation.