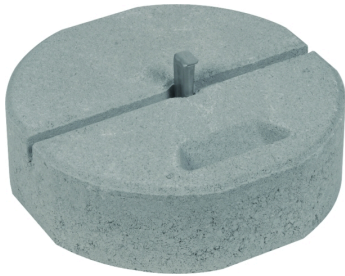


# Accessories for HVI Conductor and HVI long Conductor

## Accessories



### BES 17KG KT16 D337 SET (102 010)



Type	BES 17KG KT16 D337 SET
Part No.	102 010
Weight	17kg
Support	with fixing wedge Ø16mm
Diameter Ø	337mm
Material	concrete (C45/55)
Material of wedge / adapter	StSt
Weight	17.62 kg
Customs tariff number (Comb. Nomenclature VAE)	68109100
GTIN	4013364057814
PU	54 Stk

